

Placas para Soldar

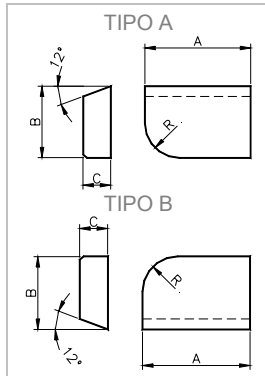
Conforme Normas ISO

Argensinter standard



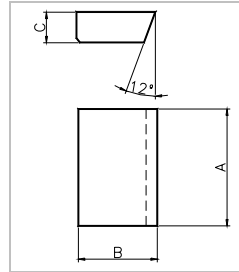
Placas para Soldar conforme Normas ISO (de acordo a standard Argensinter)

Tipo: A o B



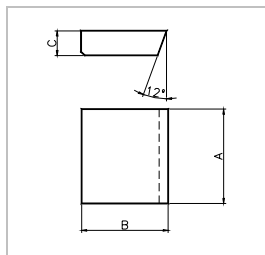
| Código | A | B | C | R |
|---------|----|----|-----|----|
| A-B6 | 6 | 4 | 2 | 2 |
| A-B82 | 8 | 5 | 2 | 3 |
| A-B8 | 8 | 5 | 3 | 3 |
| A-B102 | 10 | 6 | 2.5 | 3 |
| A-B10 | 10 | 6 | 4 | 3 |
| A-B123 | 12 | 8 | 3 | 4 |
| A-B12 | 12 | 8 | 4 | 4 |
| A-B164 | 16 | 10 | 4 | 5 |
| A-B16 | 16 | 10 | 5 | 5 |
| A-B205 | 20 | 12 | 5 | 8 |
| A-B20 | 20 | 12 | 6 | 8 |
| A-B257 | 25 | 14 | 7 | 8 |
| A-B25 | 25 | 16 | 8 | 8 |
| A-B328 | 32 | 16 | 8 | 10 |
| A-B32 | 32 | 20 | 10 | 10 |
| A-B4010 | 40 | 18 | 10 | 10 |
| A-B40 | 40 | 25 | 12 | 10 |
| A-B5012 | 50 | 20 | 12 | 12 |
| A-B50 | 50 | 32 | 16 | 12 |

Tipo: C



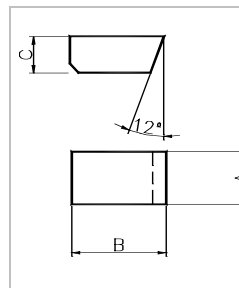
| Código | A | B | R |
|--------|----|----|-----|
| C6 | 6 | 4 | 2 |
| C82 | 8 | 5 | 2 |
| C8 | 8 | 5 | 3 |
| C102 | 10 | 6 | 2.5 |
| C10 | 10 | 6 | 4 |
| C123 | 12 | 8 | 3 |
| C12 | 12 | 8 | 4 |
| C164 | 16 | 10 | 4 |
| C16 | 16 | 10 | 5 |
| C205 | 20 | 12 | 5 |
| C20 | 20 | 12 | 6 |
| C257 | 25 | 14 | 7 |
| C25 | 25 | 16 | 8 |
| C328 | 32 | 16 | 8 |
| C32 | 32 | 20 | 10 |
| C4010 | 40 | 18 | 10 |
| C40 | 40 | 25 | 12 |
| C5012 | 50 | 20 | 12 |
| C50 | 50 | 32 | 16 |

Tipo: CB



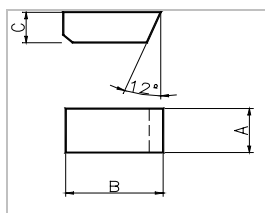
| Código | A | B | C |
|--------|----|----|-----|
| CB6 | 6 | 6 | 2 |
| CB10 | 10 | 10 | 4 |
| CB12 | 12 | 12 | 4 |
| CB14 | 14 | 14 | 5 |
| CB15 | 15 | 15 | 5 |
| CB16 | 16 | 15 | 6 |
| CB18 | 18 | 18 | 6 |
| CB207 | 20 | 18 | 7 |
| CB208 | 20 | 18 | 8 |
| CB22 | 22 | 20 | 7 |
| CB25 | 25 | 20 | 8 |
| CB28 | 28 | 20 | 8 |
| CB30 | 30 | 20 | 8.5 |

Tipo: D



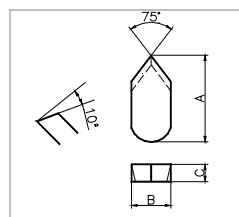
| Código | A | B | C |
|--------|----|----|----|
| D37 | 3 | 7 | 2 |
| D3 | 3 | 7 | 3 |
| D4 | 4 | 6 | 3 |
| D48 | 4 | 8 | 3 |
| D5 | 5 | 8 | 4 |
| D510 | 5 | 10 | 4 |
| D6 | 6 | 10 | 5 |
| D612 | 6 | 12 | 5 |
| D8 | 8 | 12 | 6 |
| D814 | 8 | 14 | 6 |
| D10 | 10 | 16 | 8 |
| D12 | 12 | 20 | 10 |
| D16 | 16 | 25 | 12 |

Tipo: DL



| Código | A | B | C |
|--------|----|----|---|
| DL3 | 3 | 10 | 3 |
| DL4 | 4 | 12 | 4 |
| DL5 | 5 | 15 | 5 |
| DL6 | 6 | 16 | 5 |
| DL7 | 7 | 18 | 6 |
| DL8 | 8 | 20 | 7 |
| DL9 | 9 | 20 | 7 |
| DL10 | 10 | 20 | 7 |
| DL12 | 12 | 22 | 8 |

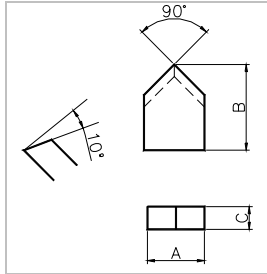
Tipo: E



| Código | A | B | C |
|--------|----|----|-----|
| E8 | 8 | 4 | 3 |
| E10 | 10 | 5 | 3 |
| E122 | 12 | 4 | 2 |
| E12 | 12 | 6 | 3 |
| E14 | 14 | 5 | 2.5 |
| E163 | 16 | 6 | 3 |
| E16 | 16 | 8 | 4 |
| E18 | 18 | 8 | 4 |
| E20 | 20 | 10 | 5 |
| E25 | 25 | 12 | 6 |
| E32 | 32 | 16 | 8 |

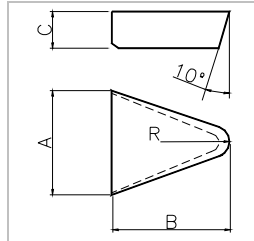
Placas para Soldar conforme Normas ISO (de acordo a standard Argensinter)

Tipo: F



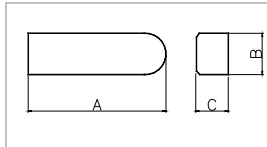
| Código | A | B | C |
|--------|----|----|-----|
| F8 | 8 | 9 | 1.5 |
| F103 | 10 | 12 | 3 |
| F10 | 10 | 12 | 4 |
| F12 | 12 | 15 | 4 |
| F164 | 16 | 18 | 4 |
| F16 | 16 | 18 | 5 |
| F205 | 20 | 20 | 5 |
| F20 | 20 | 20 | 7 |
| F25 | 25 | 25 | 8 |
| F32 | 32 | 30 | 9 |
| F40 | 40 | 35 | 10 |
| F50 | 50 | 40 | 10 |
| F60 | 60 | 45 | 10 |
| F63 | 63 | 45 | 10 |

Tipo: G



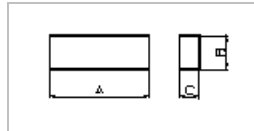
| Código | A | B | C | R |
|--------|----|----|-----|-----|
| G82 | 8 | 12 | 2.5 | 1 |
| G8 | 8 | 12 | 4 | 1 |
| G103 | 10 | 14 | 3 | 1.5 |
| G10 | 10 | 14 | 4 | 1.5 |
| G124 | 12 | 17 | 4 | 2.5 |
| G12 | 12 | 17 | 5 | 2.5 |
| G164 | 16 | 20 | 4 | 3.5 |
| G165 | 16 | 20 | 5 | 3.5 |
| G16 | 16 | 20 | 6 | 3.5 |
| G20 | 20 | 24 | 6 | 4.5 |
| G25 | 25 | 28 | 8 | 6 |
| G30 | 30 | 34 | 10 | 8 |

Tipo: M



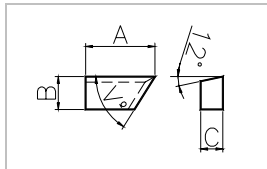
| Código | A | B | C |
|--------|----|---|---|
| M20 | 20 | 6 | 4 |
| M25 | 25 | 6 | 5 |
| M30 | 30 | 8 | 6 |
| M32 | 32 | 8 | 6 |

Tipo: O



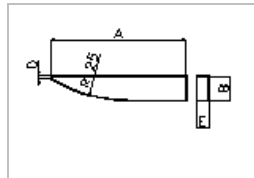
| Código | A | B | C |
|--------|----|---|---|
| O152 | 15 | 5 | 2 |
| O202 | 20 | 6 | 2 |
| O253 | 25 | 6 | 3 |
| O254 | 25 | 7 | 4 |

Tipo: PA



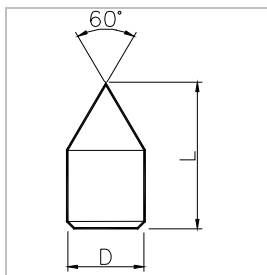
| Código | A | B | C |
|--------|----|----|----|
| PA2514 | 25 | 14 | 10 |
| PB2514 | 25 | 14 | 10 |
| PA2512 | 25 | 12 | 8 |
| PB2512 | 25 | 12 | 8 |

Tipo: R



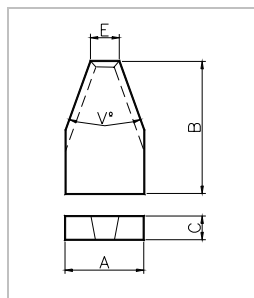
| Código | A | B | C | R |
|--------|----|-----|-----|-----|
| R12 | 12 | 2 | 0.8 | 0.8 |
| R16 | 16 | 2.5 | 1.2 | 1 |
| R19 | 19 | 3 | 1.4 | 1 |
| R22 | 22 | 3.5 | 1.8 | 1.4 |
| R25 | 25 | 4 | 2.2 | 1.4 |
| R30 | 30 | 5 | 2.8 | 1.4 |

Tipo: Z



| Código | A | B |
|--------|----|----|
| Z5 | 5 | 12 |
| Z6 | 6 | 12 |
| Z7 | 7 | 14 |
| Z8 | 8 | 16 |
| Z11 | 11 | 20 |
| Z12 | 12 | 22 |
| Z14 | 14 | 22 |
| Z16 | 16 | 28 |
| Z18 | 18 | 30 |

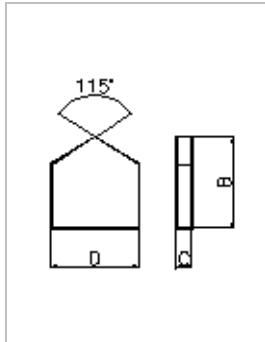
Tipo: X



| Código | A | B | C | E |
|--------|----|----|-----|----|
| X16 | 16 | 25 | 6 | 5 |
| X168 | 16 | 25 | 8 | 5 |
| X19 | 19 | 28 | 6.5 | 7 |
| X198 | 19 | 28 | 8 | 7 |
| X25 | 25 | 35 | 7 | 10 |
| X258 | 25 | 35 | 8 | 10 |
| X38 | 38 | 45 | 8 | 15 |
| X389 | 38 | 45 | 9.5 | 15 |
| X44 | 44 | 50 | 9.5 | 17 |

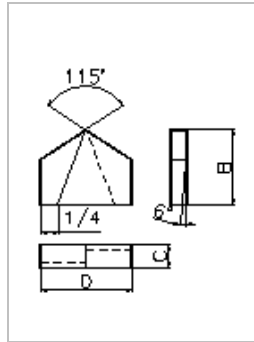
Placas para Soldar conforme Normas ISO (de acordo a standard Argensinter)

Tipo: W



| Código | D | B | C |
|--------|------|-----|-----|
| W2 | 2.5 | 3.5 | 0.6 |
| W3 | 3.5 | 4.5 | 0.8 |
| W4 | 4.5 | 5 | 1 |
| W5 | 5.5 | 6 | 1.3 |
| W6 | 6.5 | 7 | 1.5 |
| W7 | 7.5 | 8 | 1.8 |
| W8 | 8.5 | 8 | 1.8 |
| W9 | 9.5 | 9 | 2 |
| W10 | 10.5 | 9 | 2 |
| W11 | 11.8 | 11 | 2.5 |
| W12 | 12.8 | 11 | 2.5 |
| W13 | 13.8 | 12 | 2.8 |
| W14 | 14.8 | 12 | 2.8 |
| W15 | 15.8 | 14 | 3 |
| W16 | 17 | 14 | 3 |
| W17 | 18 | 16 | 3.5 |
| W18 | 19 | 16 | 3.5 |
| W19 | 20 | 18 | 4 |
| W20 | 21 | 18 | 4 |
| W21 | 22 | 18 | 4 |
| W22 | 23 | 18 | 4 |
| W23 | 24 | 20 | 4.5 |
| W24 | 25 | 20 | 4.5 |
| W25 | 26 | 20 | 4.5 |

Tipo: W



| Código | D | B | C |
|--------|------|----|-----|
| W26 | 27.5 | 20 | 4.5 |
| W27 | 28.5 | 22 | 5 |
| W28 | 29.5 | 22 | 5 |
| W29 | 30.5 | 22 | 5 |
| W30 | 31.5 | 22 | 5 |
| W31 | 32.5 | 24 | 5.5 |
| W32 | 33.5 | 24 | 5.5 |
| W33 | 34.5 | 24 | 5.5 |
| W34 | 35.5 | 24 | 5.5 |
| W35 | 36.5 | 25 | 6 |
| W36 | 37.5 | 25 | 6 |
| W37 | 38.5 | 25 | 6 |
| W38 | 39.5 | 25 | 6 |
| W39 | 40.5 | 26 | 7 |
| W40 | 41.5 | 26 | 7 |
| W41 | 42.5 | 26 | 7 |
| W42 | 43.5 | 26 | 7 |
| W43 | 44.5 | 28 | 8 |
| W44 | 45.5 | 28 | 8 |
| W45 | 46.5 | 28 | 8 |
| W46 | 47.5 | 28 | 8 |
| W47 | 48.5 | 29 | 9 |
| W48 | 49.5 | 29 | 9 |
| W49 | 50.5 | 29 | 9 |
| W50 | 51.5 | 29 | 9 |

Argensinter S.R.L. – Metal Duro y Ferramentas Especiais
Tacuarí 925 (B1704FJM) Ramos Mejía.
Provincia de Buenos Aires, Argentina
Fone: (+54) 11 4658 7637 – Fax: (+54) 11 4656 8028
email: ventas@argensinter.com.ar - Web site: <http://www.argensinter.com.ar>