

# Placas para Serras Circulares

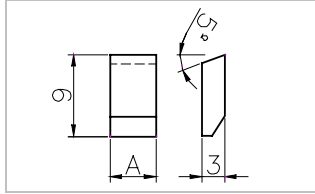
Argensinter standard

---



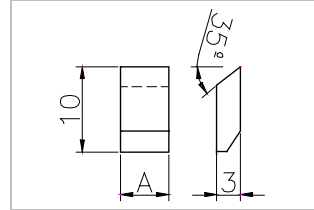
## Placas para Serras Circulares (de acordo a standard Argensinter)

### Tipo: SA



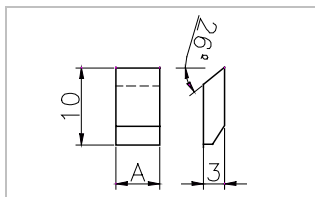
Código	A
SA3	3
SA35	3.5
SA4	4
SA45	4.5
SA5	5

### Tipo: SB



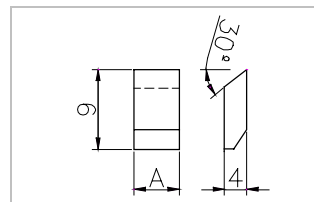
Código	A
SB3	3
SB35	3.5
SB4	4
SB45	4.5
SB5	5

### Tipo: SC



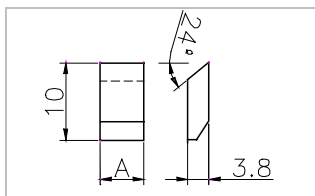
Código	A
SC3	3
SC35	3.5
SC4	4
SC45	4.5
SC5	5

### Tipo: SD



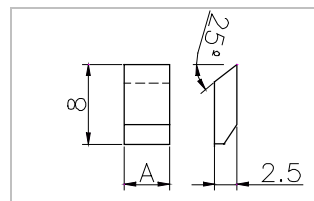
Código	A
SD3	3
SD35	3.5
SD4	4
SD45	4.5
SD5	5

### Tipo: SE



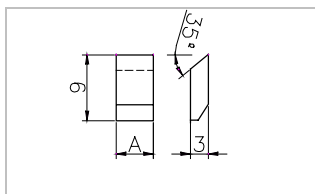
Código	A
SE3	3
SE35	3.5
SE4	4
SE45	4.5
SE5	5

### Tipo: SF



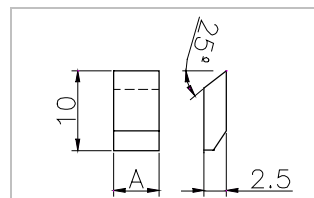
Código	A
SF3	3
SF35	3.5
SF4	4
SF45	4.5
SF5	5

### Tipo: SG



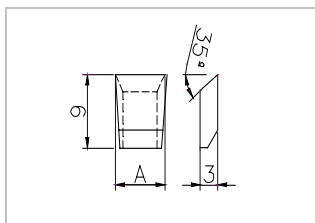
Código	A
SG3	3
SG35	3.5
SG4	4
SG45	4.5
SG5	5

### Tipo: SH



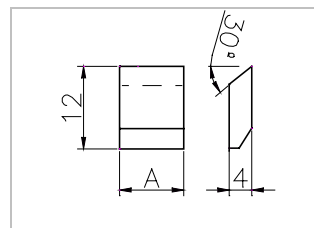
Código	A
SH3	3
SH35	3.5
SH4	4
SH45	4.5
SH5	5

### Tipo: SJ



Código	A
SJ3	3
SJ35	3.5
SJ4	4
SJ45	4.5
SJ5	5

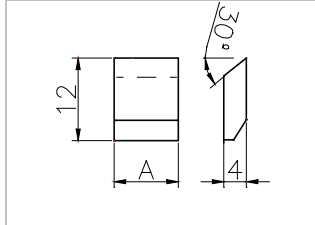
### Tipo: SK



Código	A
SK4	4
SK4.5	4.5
SK5	5
SK5.5	5.5
SK6	6
SK6.5	6.5
SK7	7
SK7.5	7.5
SK8	8
SK8.5	8.5
SK9	9
SK9.5	9.5
SK10	10

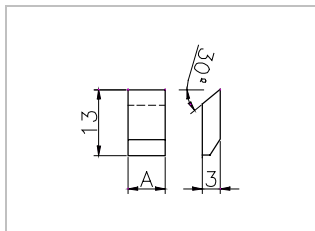
## Placas para Serras Circulares (de acordo a standard Argensinter)

### Tipo: SK (continuação)



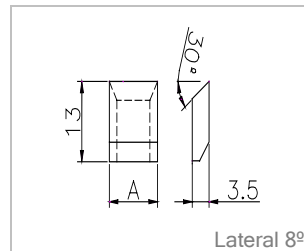
Código	A	Código	A	Código	A	Código	A
SK10.5	10.5	SK20.5	20.5	SK30.5	30.5	SK41	41
SK11	11	SK21	21	SK31	31	SK42	42
SK11.5	11.5	SK21.5	21.5	SK31.5	31.5	SK43	43
SK12	12	SK22	22	SK32	32	SK44	44
SK12.5	12.5	SK22.5	22.5	SK32.5	32.5	SK45	45
SK13	13	SK23	23	SK33	33	SK46	46
SK13.5	13.5	SK23.5	23.5	SK33.5	33.5	SK47	47
SK14	14	SK24	24	SK34	34	SK48	48
SK14.5	14.5	SK24.5	24.5	SK34.5	34.5	SK49	49
SK15	15	SK25	25	SK35	35	SK50	50
SK15.5	15.5	SK25.5	25.5	SK35.5	35.5	SK51	51
SK16	16	SK26	26	SK36	36	SK52	52
SK16.5	16.5	SK26.5	26.5	SK36.5	36.5	SK53	53
SK17	17	SK27	27	SK37	37	SK54	54
SK17.5	17.5	SK27.5	27.5	SK37.5	37.5	SK55	55
SK18	18	SK28	28	SK38	38	SK56	56
SK18.5	18.5	SK28.5	28.5	SK38.5	38.5	SK57	57
SK19	19	SK29	29	SK39	39	SK58	58
SK19.5	19.5	SK29.5	29.5	SK39.5	39.5	SK59	59
SK20	20	SK30	30	SK40	40	SK60	60

### Tipo: SL



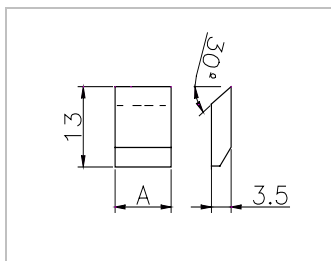
Código	A
SL3	3
SL35	3.5
SL4	4
SL45	4.5
SL5	5

### Tipo: SM



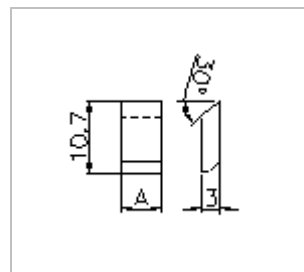
Código	A
SM4	4
SM5	5
SM6	6
SM7	7
SM8	8
SM9	9
SM10	10
SM12	12
SM15	15
SM18	18
SM20	20
SM22	22
SM25	25

### Tipo: SN



Código	A
SN4	4
SN5	5
SN6	6
SN7	7
SN8	8
SN9	9
SN10	10
SN12	12
SN15	15
SN18	18
SN20	20
SN22	22
SN25	25

### Tipo: SO

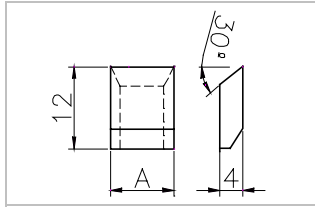


Código	A
SO3	3
SO35	3.5
SO4	4
SO45	4.5
SO5	5

## Placas para Serras Circulares (de acordo a standard Argensinter)

Pág. 4 de 5

Tipo: SP



Código	A
SP4	4
SP5	5
SP6	6
SP7	7
SP8	8
SP9	9
SP10	10
SP12	12
SP15	15
SP18	18
SP20	20
SP22	22
SP25	25

Por favor, para informação adicional contate-nos ou visite-o nosso website [www.argensinter.com](http://www.argensinter.com)

Argensinter S.R.L. – Metal Duro y Herramientas Especiales  
Tacuarí 925 (B1704FJM) Ramos Mejía.  
Provincia of Buenos Aires, Argentina  
Tel.: (+54) 11 4658 7637 – Fax: (+54) 11 4656 8028  
email: [ventas@argensinter.com.ar](mailto:ventas@argensinter.com.ar) - Web site: <http://www.argensinter.com.ar>